

# Duinen II



I used about 870m 4ply yarn  
Hook size 4,5mm

US terms:

ch - chain

sl st- slip stitch

sc - single crochet

dc- double crochet

fpdc- front post double crochet

Turn your work after every row

Row 1: ch 4, 4 dc in first ch

Row 2: ch 3, 2dc in first stitch, 4 dc

Row 3: ch 3, dc in following 3 stitches, ch 2, dc in next 2 stitches, 3 dc in last stitch

Row 4 ch 3, 2dc in first stitch, dc in following 4 stitches, (2dc, ch2,2dc) in ch-space, dc in following 4 stitches

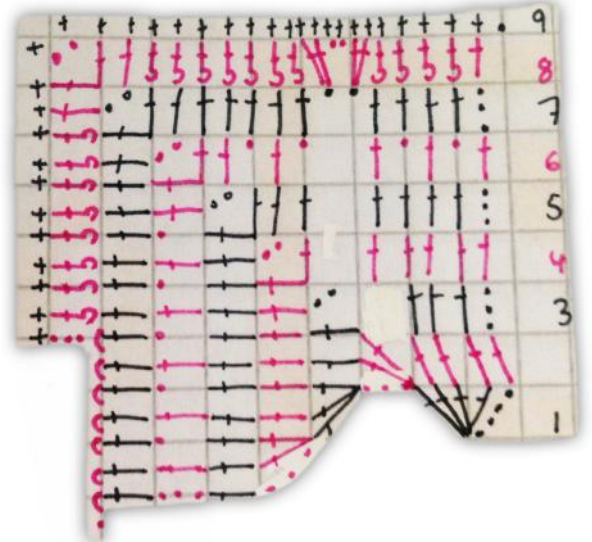
Row 5: ch 3, dc in each dc, (2dc, ch2,2dc) in ch-space, dc in each following dc

Row 6: ch 3, \*dc, ch1, skip 1\* \*-\* repeat, (2dc, ch2,2dc) in ch-space, \*ch1, skip 1, dc\* \*-  
\*repeat

Row 7: ch 3, dc in following 4 stitches, ch 2, dc in following 5 stitches, (2dc, ch2,2dc) in ch-space, dc in each following stitch

Row 8: ch 1, sl st in following 7 stitches, ch 3, fpdc around following 8 stitches, (2dc, ch2,2dc) in ch-space, fpdc around following 7 stitches, (2dc, ch2,2dc) in ch-space, fpdc around following 4 stitches, dc in last stitch

Row 9: ch 1, sc in each stitch



From now on I will just write down, which stitches you have to use in each row and new increases or decreases. The rows worked with (ch1,skip1,dc) are ending sometimes with 1 dc or 2dcs. Every Row starts with ch 3 (or ch1 if you work sc or sl st). In ch-spaces always (2dc,ch2,2dc) except sc row, here you work just 2 sc.

Row 10 : ch 3, \*dc, ch1, skip 1\* \*-\*repeat (increases in rows after sc will be worked like in the following example: (2dc in first sc in ch-space, ch2, 2dc in second sc in ch-space)

Row 11: dc

Row 12: 7 sl st, ch 3, fpdc

Row 13: sc

Row 14: \*dc,ch1, skip1\* repeat

Row 15: dc

Row 16: 15 sl st, 2 sl st in first ch-space, ch 3, fpdc



Row 17: sc

Row 18 : \*dc,ch1, skip1\* repeat

Row 19: dc

Row 20: 7 sl st, ch 3, fpdc

Row 21: sc

Row 22: \*dc,ch1, skip1\* repeat

Row 23: dc

Row 24: 7 sl st, ch 3, fpdc

Row 25: sc

Row 26: \*dc,ch1, skip1\* repeat

Row 27: ch 3, dc in following 15 stitches, ch2, dc in all following stitches

Row 28: 7 sl st, ch 3, fpdc

Row 29: sc

Row 30: \*dc,ch1, skip1\* repeat

Row 31: dc

Row 32: fpdc

Row 33: sc

Row 34: \*dc,ch1, skip1\* repeat

Row 35: dc

Row 36: fpdc

Row 37: sc

Row 38: \*dc,ch1, skip1\* repeat

Row 39: dc

Row 40: sl st to first ch-space, 2 sl st in ch-space, ch 3, fpdc



Row 41: sc

Row 42: \*dc,ch1, skip1\* repeat

Row 43: dc

Row 44: fpdc

Row 45: sc

Row 46: \*dc,ch1, skip1\* repeat

Row 47: ch 3, dc in following 20 stitches, ch 2, dc in all following stitches

Row 48: 28 sl st, ch 3, fpdc

Row 49: sc

Row 50: \*dc,ch1, skip1\* repeat

Row 51: dc

Row 52: 21 sl st, ch 3, fpdc

Row 53: sc

Row 54: \*dc,ch1, skip1\* repeat

Row 55: dc

Row 56: 14 sl st, ch 3, fpdc

Row 57: sc

Row 58: \*dc,ch1, skip1\* repeat

Row 59: dc

Row 60: sl st to first ch-space, 2 sl st in ch-space, ch 3, fpdc

Row 61: sc

Row 62: \*dc,ch1, skip1\* repeat

Row 63: dc

Row 64: 7 sl st, ch 3, fpdc

Row 65: sc

Row 66: \*dc,ch1, skip1\* repeat

Row 67: ch 3, dc in following 23 stitches, ch2, dc in all following stitches

Row 68 : 7 sl st, ch 3, fpdc

Row 69: sc

Row 70: \*dc,ch1, skip1\* repeat

Row 71: dc

Row 72: fpdc

Row 73: sc

Row 74: \*dc,ch1, skip1\* repeat

Row 75: dc

Row 76: 28 sl st, ch 3, fpdc

Row 77: sc

Row 78: \*dc,ch1, skip1\* repeat

Row 79: dc

Row 80: sl st to ch-space, 2 sl st in ch-space, ch 3, fpdc

Row 81: sc

Row 82: \*dc,ch1, skip1\* repeat

Row 83: dc

Row 84: fpdc

Row 85: sc

Row 86: \*dc,ch1, skip1\* repeat

Row 87: ch 3, dc in following 20 stitches, ch 2, dc in all following stitches

Row 88: 28 sl st, ch 3, fpdc

Row 89: sc

Row 90: \*dc,ch1, skip1\* repeat

Row 91: dc

Row 92: 21 sl st, ch 3, fpdc

Row 93: sc

Row 94: \*dc,ch1, skip1\* repeat

Row 95: dc

Row 96: 14 sl st, ch 3, fpdc

Row 97: sc

Row 98: \*dc,ch1, skip1\* repeat

Row 99: dc

Row 100: sl st to first ch-space, 2 sl st in ch-space, ch 3, fpdc

Row 101: sc

Row 102: \*dc,ch1, skip1\* repeat

Row 103: dc

Row 104: 7 sl st, ch 3, fpdc

Row 105: sc

Row 106: \*dc,ch1, skip1\* repeat

Row 107: dc

Row 108: 14 sl st, ch 3, fpdc

Row 109: sc  
Row 110: \*dc,ch1, skip1\* repeat  
Row 111: dc  
Row 112: 21 sl st, ch 3, fpdc  
Row 113: sc  
Row 114: \*dc,ch1, skip1\* repeat  
Row 115: dc  
Row 116: sl st to first ch-space, 2 sl st in ch-space, ch 3, fpdc  
Row 117: sc  
Row 118: \*dc,ch1, skip1\* repeat  
Row 119: dc  
Row 120: 21 sl st, ch 3, fpdc  
Row 121: sc  
Row 122: \*dc,ch1, skip1\* repeat  
Row 123: dc  
Row 124: 21 sl st, ch 3, fpdc  
Row 125: sc  
Row 126: \*dc,ch1, skip1\* repeat  
Row 127: dc  
Row 128: 14 sl st, ch 3, fpdc  
Row 129: sc  
Row 130: \*dc,ch1, skip1\* repeat  
Row 131: dc  
Row 132: sl st

Cut the yarn, weave ends and block the shawl.