



SIS HOMEMADE  
←—————→  
• • •  
FLOWER VALLEY

# SIS HOMEMADE

## FLOWER VALLEY shawl by JOANNA GRZELAK

It took me a while to prepare this pattern,  
so I'm asking you to tag our page when you're sharing the shawl you've made  
(@SisHomemad / #sishomemd / #flowervalleyshawl).

**FLOWER VALLEY** shawl pattern and photos used in this description belong to

Joanny Grzelak / **SIS HOMEMADE**

All rights reserved. Please do not share, sell, or redistribute this pattern in part or in whole.

Please do not record video tutorials.

If you want to share this pattern with someone else, please give a link to one of our fanpages.



[sishomemade.pl](http://sishomemade.pl)



[ravelry.com/people/SisHomemade](https://www.ravelry.com/people/SisHomemade)



[facebook.com/Sishomemd](https://www.facebook.com/Sishomemd)



[pinterest.com/antomasiak/sishomemade](https://www.pinterest.com/antomasiak/sishomemade)



[instagram.com/sishomemd](https://www.instagram.com/sishomemd)

If you have any questions about this pattern, feel free to contact us, or visit our dedicated group on FB:

[SisHomemadePatternGroup](#)

You may sell the finished product :)

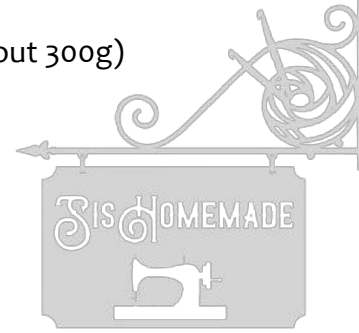
photos: mkaciuba.pl



**ENJOY YOUR CROCHETING!**

## Materials:

- 50% cotton / 50% acrylic - 1200m (+200m for the basic border)/3 strands (about 300g)
- 3 mm crochet hook.



## Measurements:

- about 180/100 cm – after blocking

## How to read the chart:

Rows always start with chain 3 or chain 2 (which is counted as 1 dc or 1 sc) and end with dc or sc.

After finishing rows 1-7, the corners of the shawl will go up - it is normal.

The top of the shawl should straighten up after the next few rows. If you have about 11-14 rows and edge of the shawl goes up, you can try with chain 4 instead of chain 3 at beginning of the rows and a treble crochet (yarn over the hook 2 times) instead of a double crochet at the end of the rows.

R. 1-8 you can see whole rows. From the 9th row the chart is shortened. - there is a half of shawl on the chart. After reaching the middle we make mirror image.

Start with chain 4 and join a ring with slip stitch (or make a magic ring). The first row is crocheted around the ring.



Turn your work after every row.


**After completing to R. 40, continue with repetition rows 9 – 40 and go to Border.**





## Used stitches (US terms):

 - magic ring/ch4


 or  - slip stitch

 - single crochet


 - chain


 - double crochet

 - treble crochet

 - double treble crochet

 - front post double crochet

 - double crochet increase

 - 2 double crochet together



- 3 treble crochet together



- 5 double crochet together



- puff (yarn over 3 times)



- puff (yarn over 4 times)




- 3 double treble crochet together





- picot



- half double crochet

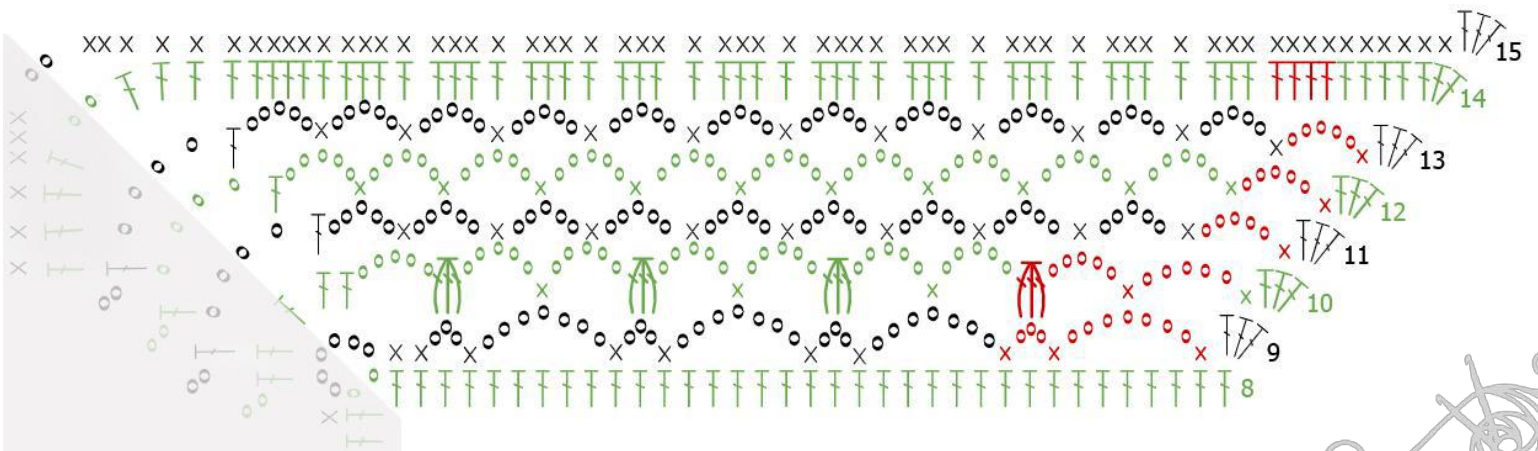
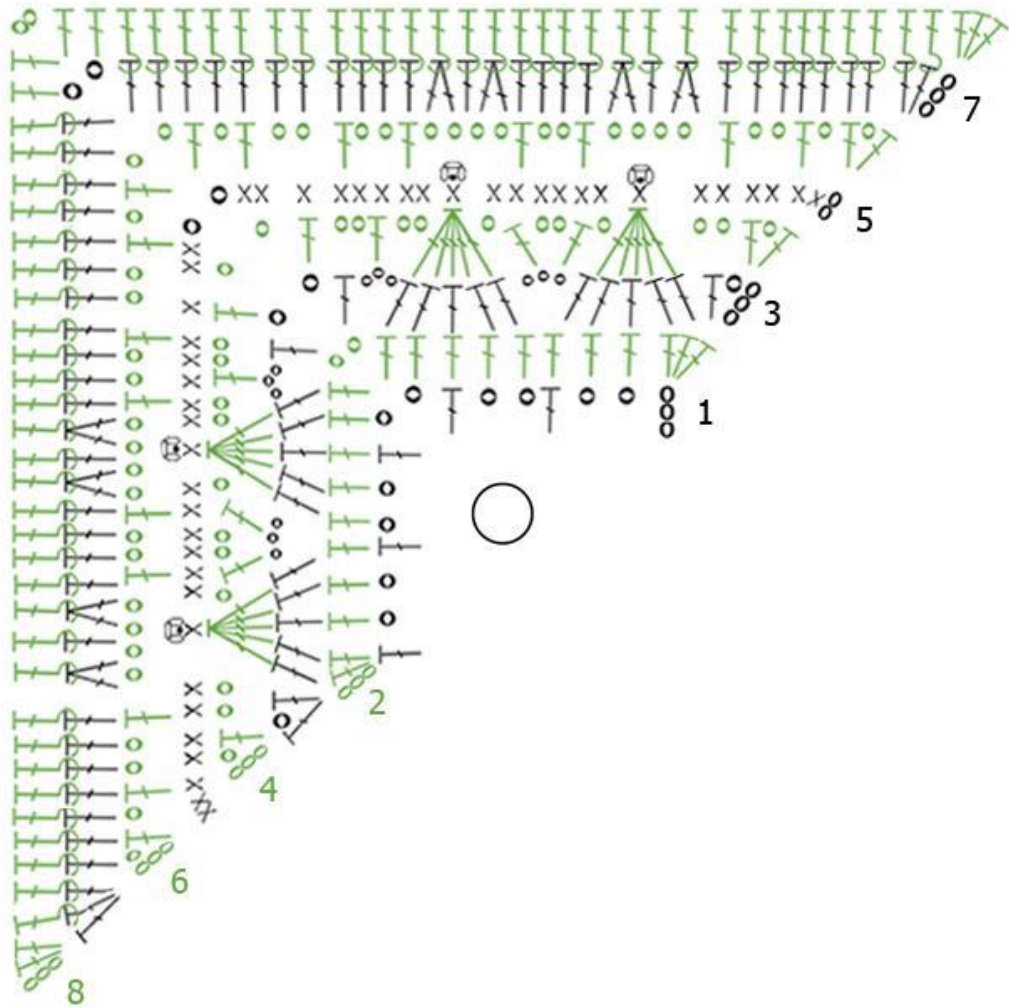
 - right side of the shawl

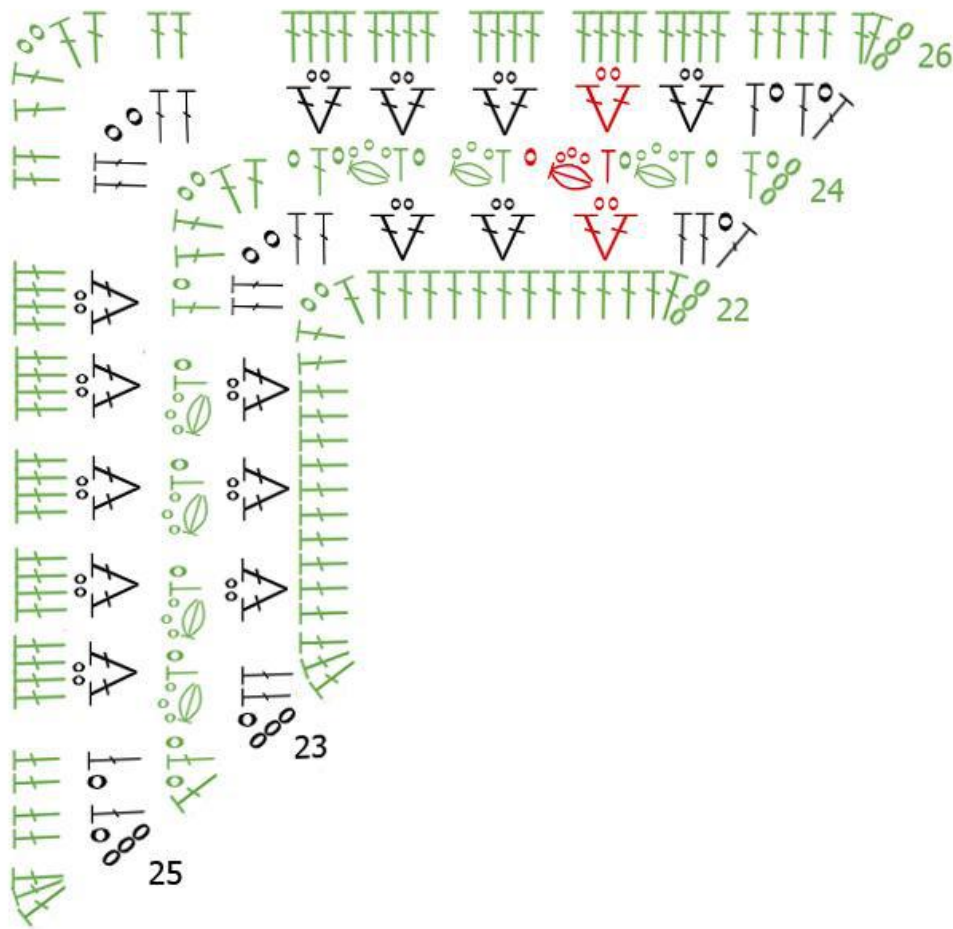
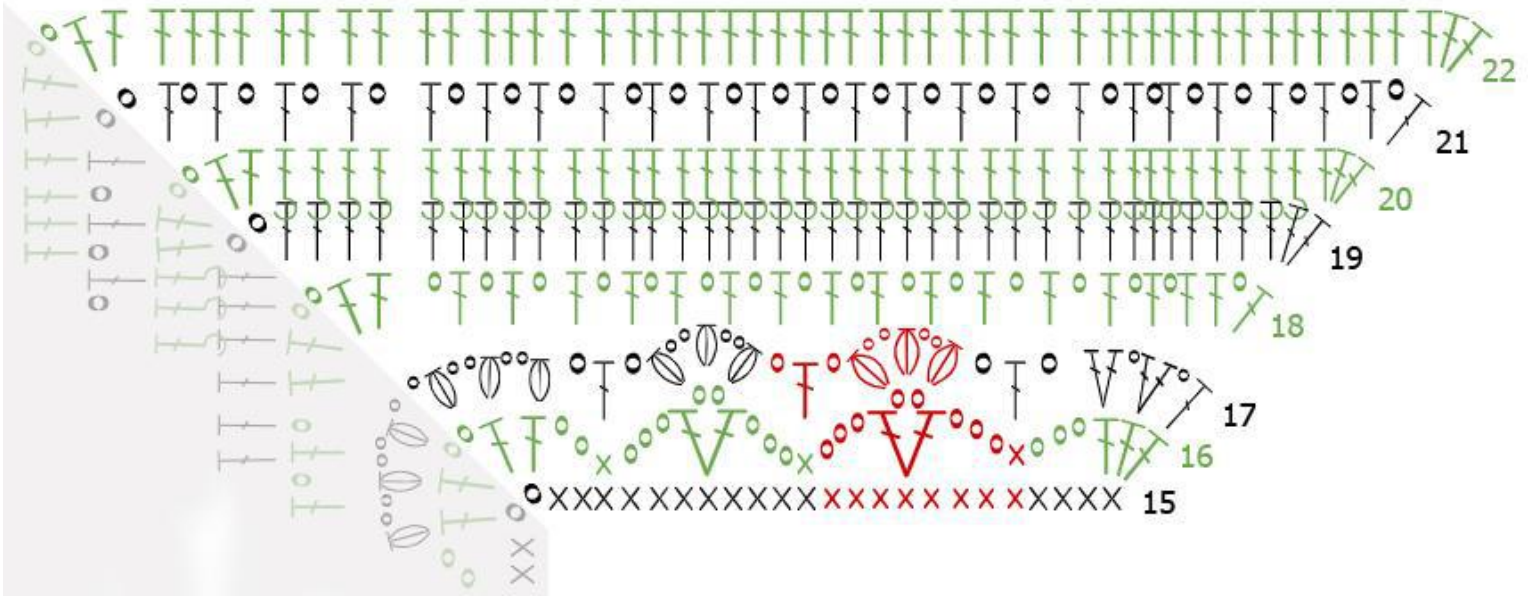
 - left side of the shawl

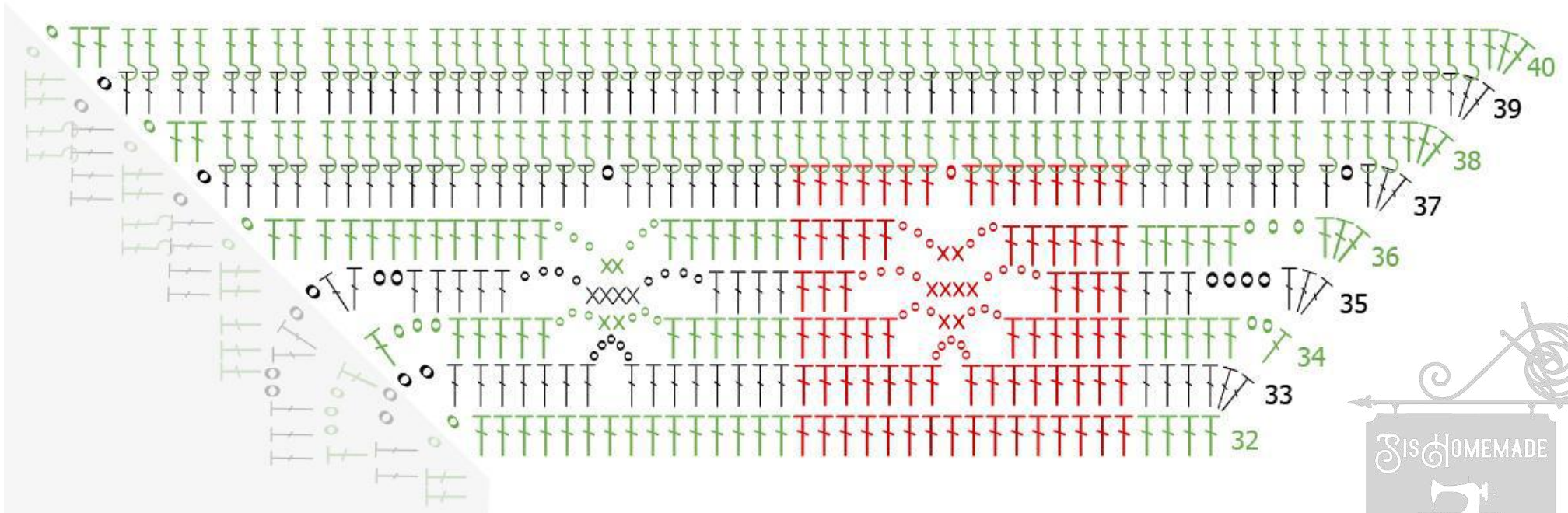
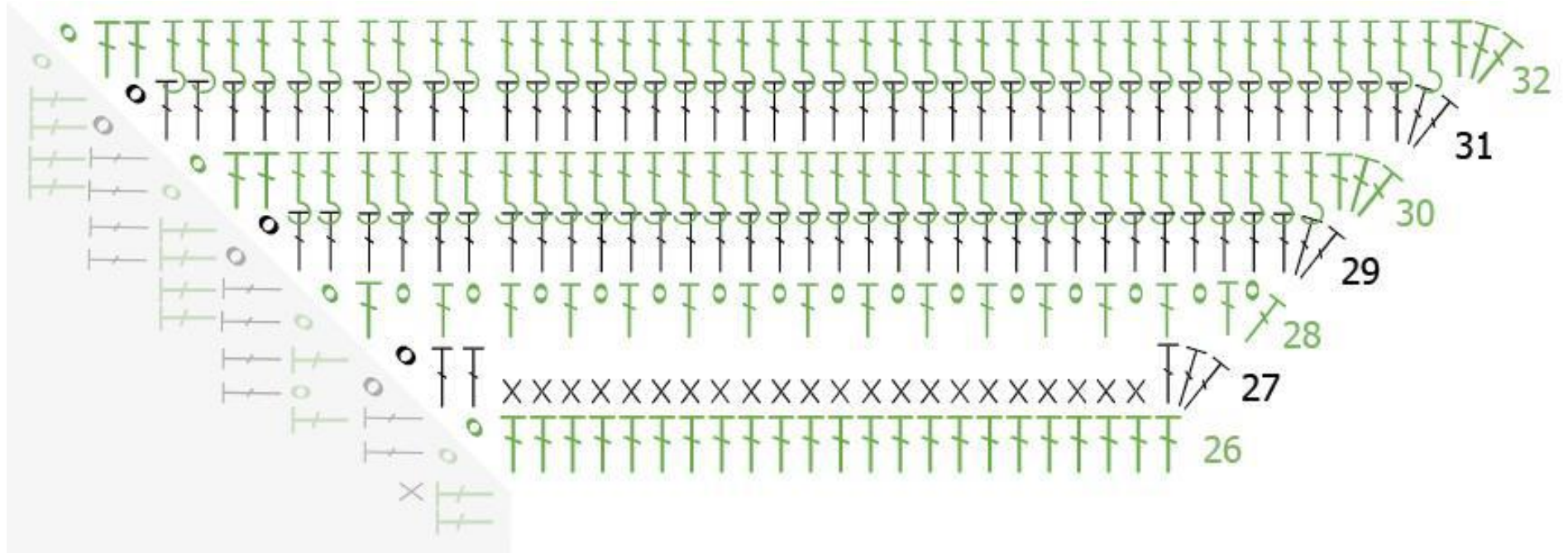
 - repeat in the middle of the row



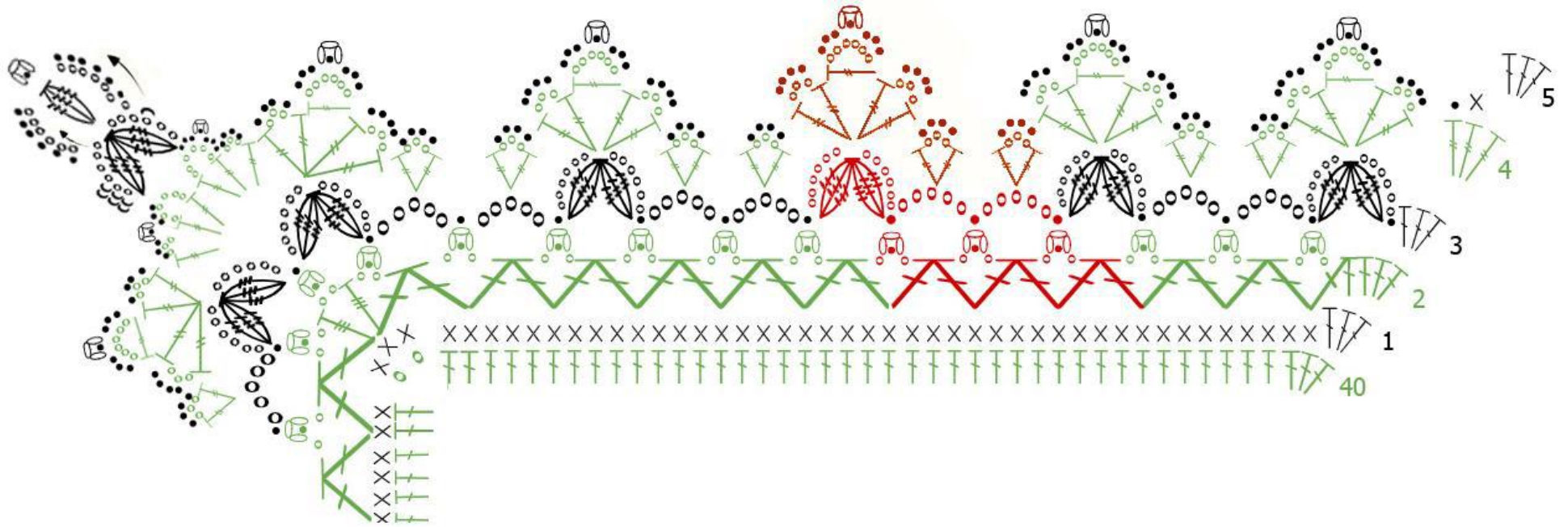
The chart:



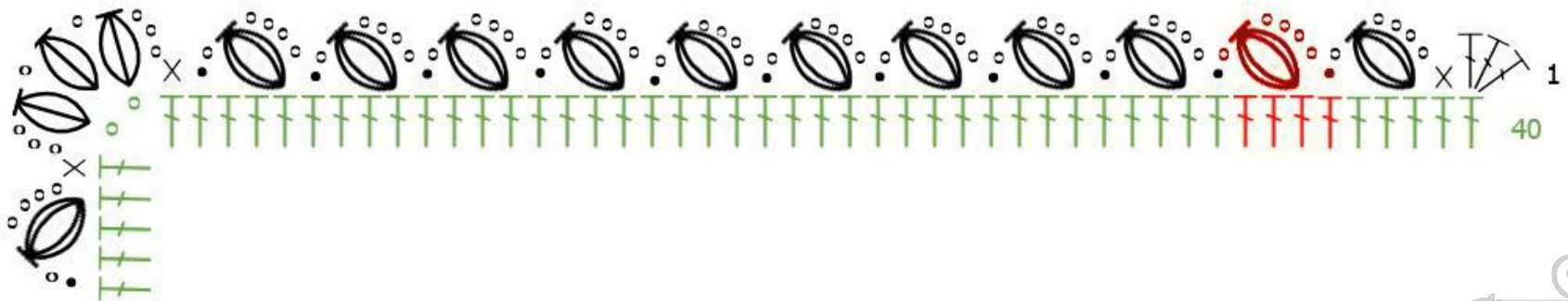




Border I (base):



Border II (alternative):







**Table:**

- The table shows the number of stitches on one half of the row.
- Count 3 chain stitches at the beginning of the row as 1 dc and 2 chain as 1 sc.

Row	Stitch count in repetition		Stitches
	I	II	
1	3	-	dc
2	11	-	dc
3	13	-	dc (dc5tog count as 1)
4	8	-	dc
5	23	-	sc
6	10	-	dc
7	31	-	Dc ( dc2tog count as 1)
8	35	-	dc + Fpdc
9	4*	20*	*ch-7-sp*
10	4	20	Tr3tog
11	10*	42*	* ch-5-sp *
12	11*	43*	* ch-4-sp and ch-5-sp *
13	12*	44*	* ch-5-sp *
14	59	187	dc
15	63	191	dc + sc
16	7	23	V
17	24	72	puff
18	39	103	dc
19	79	207	dc
20	83	211	dc + Fpdc
21	44	108	dc
22	91	219	dc
23	22*	54*	V
24	23	55	puff
25	24*	56*	V
26	107	235	dc
27	111	239	dc + sc
28	58	122	dc
29	119	247	dc
30	123	251	dc + Fpdc
31	127	255	dc
32	131	259	dc + Fpdc
33-37	8*	16*	*flower*
38	155	283	dc + Fpdc
39	159	287	dc
40	163	291	dc + Fpdc

## Written description

Many thanks to **YNORY**, who prepared this description and **SARAH** who make Border I.

### Used stitches (US terms):

**sl st** – slip stitch

**ch** – chain

**picot** – ch 3, insert hook back into the center of the base st, yo, pull through all loops on hook.

**sc** – single crochet

**hdc** – half double crochet

**dc** – double crochet

**dc2tog** – 2 double crochet together

**dc5tog** – 5 double crochet together

**Fpdc** – front post dc

**tr3tog** – 3 treble crochet together

**puff stitch** - yarn over and insert the hook into the stitch. Yarn over and pull through. This process will be repeated 3 or 4 times and you will end up with 7 or 9 loops on your hook which will be bunched together. Yarn over and pull through all of the loops on the hook except the last one (2 loops on hook). Yarn over and pull through last 2 loops.

**yo** – yarn over

#### Row 1

In the ring:

ch5, (1dc,ch2) x 4, 1 dc

#### Row 2

ch3 (acts as first dc), 2 dc in first st,  
 (2 dc in ch space, 1 dc in next st) x 2,  
 2 dc, ch2, 2 dc (in ch2 space for corner)  
 (1 dc in next st, 2 dc in ch space) x 2  
 3 dc in top of 3<sup>rd</sup> ch of ch5



**Row 3**

Ch4, 1 dc in first st,  
 [(1 dc in each dc) x 5, ch3] x 2  
 1 dc, ch2, 1 dc (in ch2 space for corner)  
 [ch3, (1 dc in each dc) x 5] x 2  
 1 dc, ch 1, 1 dc in top of ch3

**Row 4**

Ch4, 1 dc in first st,  
 ch2, dc5tog, ch 1,  
 (1 dc, ch 2, 1 dc) all in next ch space  
 ch1, dc5tog, ch2,  
 1 dc in next ch space, ch2  
 1 dc, ch2, 1 dc (in ch2 space for corner)  
 ch2, 1 dc in next ch space  
 ch2, dc5tog, ch1,  
 (1 dc, ch 2, 1 dc) all in next ch space  
 ch1, dc5tog, ch2,  
 1 dc, ch 1, 1 dc in top of ch3

**Row 5**

ch2, 2 sc in first st,  
 1sc in ch space, 1 sc in the next st,  
 2 sc in ch2 space, 1 sc + 1 picot in the next st,  
 1 sc in ch space, 1 sc in the next st, 2 sc in ch2 space, 1 sc in the next st, 1 sc in ch space,  
 1 sc + 1 picot in the next st,  
 (2 sc in ch2 space, 1 sc in the next st) x 2  
 2 sc, ch 2, 2 sc (in ch2 space for corner)  
 (1 sc in the next st, 2 sc in ch2 space) x 2  
 1 sc + 1 picot in the next st,  
 1 sc in ch space, 1 sc in the next st, 2 sc in ch2 space, 1 sc in the next st, 1 sc in ch space,  
 1 sc + 1 picot in the next st,  
 2 sc in ch2 space, 1 sc in next st, 1 sc in ch space, 3 sc in top of ch3

**Row 6**

ch4, 1 dc in first st,  
 ch1, skip 1 st, 1 dc in next st, ch2, skip 2 st, 1 dc in next st  
 (ch4, skip: [1 sc, 1 picot and 1 sc], 1 dc in next sc, ch2, skip 2 sc, 1 dc) x 2  
 ch2, skip 2 sc, 1 dc, ch1  
 1 dc, ch2, 1 dc (in ch2 space for corner)  
 ch1, 1 dc, ch2, skip 2 sc, 1 dc, ch2, skip 2 sc, 1 dc,  
 (ch4, skip: [1 sc, 1 picot and 1 sc], 1 dc in next st, ch2, skip 2 sc, 1 dc) x 2  
 ch1, 1dc, ch1, 1dc in top of ch2



**Row 7**

ch3, 2 dc in first st,  
 (1 dc in ch space, 1 dc in next st) x 2, 2 dc in ch space, 1 dc in next st,  
 (dc2tog, 1 dc, dc2tog) all in 4ch space  
 1 dc in next st, 2 dc in ch space, 1 dc in next st,  
 (dc2tog, 1 dc, dc2tog) all in 4ch space  
 (1 dc in next st, 2 dc in ch space,) x 2  
 1 dc in next st, 1 dc in next ch1, 1 dc in next st  
 2 dc, ch 2, 2 dc (in ch2 space for corner)  
 1 dc in next st, 1 dc in next ch1, 1 dc in next st  
 (2 dc in ch space, 1 dc in next st) x 2  
 (dc2tog, 1 dc, dc2tog) all in 4ch space  
 1 dc in next st, 2 dc in ch space, 1 dc in next st,  
 (dc2tog, 1 dc, dc2tog) all in 4ch space  
 1 dc in next st, 2 dc in ch space, (1 dc in next st, 1 dc in ch space) x 2, 3 dc in top of ch 3

**Row 8**

ch3, 2 dc in first st,  
 1 fpdc in every st till corner,  
 2 dc, ch 2, 2 dc (in ch2 space for corner),  
 1 fpdc in every stitch till the end,  
 3 dc in top of ch3

**Row 9**

ch3, 2 dc in first st,  
 1 sc in next st,  
 (ch7, skip 5 st, 1 sc in next st, ch3, skip 1 st, sc in next st) repeat till 1 st before corner,  
 1 sc in next st, ch6,  
 1 sc in next st, (ch3, skip 1 st, sc in next st, ch7, skip 5 st, 1 sc in next st) repeat till end, 3 dc in top of ch3

**Row 10**

ch3, 2 dc in first st,  
 1 sc in next st, (ch5, 1 sc in ch7 space, ch 5, tr3tog in ch3 space) repeat till corner ch6 space,  
 ch5 dc 5 in ch6 space, (ch5, tr3tog in ch3 space, ch5, 1 sc in ch7 space) repeat till end, ch5, 1 sc in last but one st, 3 dc in top of ch3

**Row 11**

ch3, 2 dc in first st, 1sc in next st,  
 ch5, 1 sc in ch space repeat till corner,  
 ch5, 1 dc in 2<sup>nd</sup> dc of corner, ch4, 1 dc in 4<sup>th</sup> dc of corner  
 ch5, 1 sc in ch space repeat till end (ending with a ch5), 1 sc in last but one st, 3 dc in top of ch3



**Row 12**

ch3, 2 dc in first st,  
same as row 11 but with dc, ch4, dc in ch4 space for corner

**Row 13**

same as row 12

**Row 14**

ch3, 2 dc in first st,  
(1 dc in next dc) x 2, 1 dc in sc, 4 dc in ch space, 1 dc in sc,  
3 dc in ch space, 1 dc in sc, repeat till last sc before corner  
1 dc in that sc, 4 dc in ch space, 1 dc in dc,  
3 dc in ch space, ch2, 3 dc in same ch space for the corner  
1 dc in dc, 4 dc in ch space, 1 dc in sc,  
3 dc in ch space, 1 dc in sc, repeat till last ch space before end  
4 dc in that ch space, 1 dc in sc, (1 dc in next dc) x 2, 3 dc in top of ch3

**Row 15**

ch3, 2 dc in first st,  
1 sc in each st till corner  
2 sc, ch2, 2 sc in corner ch2 space  
1 sc in each st till corner  
3 dc in top of ch3

**Row 16**

ch3, 2 dc in first st,  
ch 3, skip 3 sc, 1 sc in next sc, (ch 3, skip 3 sc, 1 dc, ch2, 1 dc in same st, ch 3, skip 3 sc, 1 sc in next sc)  
repeat till 3<sup>rd</sup> last sc before corner, sc in that sc, ch2, skip 2 sc,  
2 dc, ch2, 2 dc in corner ch2 space,  
ch2, skip 2 sc, sc in next sc,  
(ch 3, skip 3 sc, 1 dc, ch2, 1 dc in same st, ch 3, skip 3 sc, 1 sc in next st) repeat till 5<sup>th</sup> last sc, sc in that  
sc, ch3, skip 3 sc, 3 dc in top of ch3

**Row 17**

ch4, 2 dc in next dc (=increase), ch1, 2 dc in next dc, ch1, 1 dc in next sc, ch1,  
(in ch2 space: [(1 puff stitch, ch2) x 2, 1 puff ], ch1, 1 dc in next sc, ch 1)  
repeat till last sc before corner, 1 dc in that sc, ch1, (1 puff stitch in next dc, ch2) x 2,  
in 2ch space: [1 puff stitch, ch2, 1 puff stitch],  
(ch2, 1 puff stitch in next dc) x 2,  
ch1, dc in next sc, ch1,  
(in ch2 space: [(1 puff stitch, ch2) x 2, 1 puff ], ch1, 1 dc in next sc, ch 1) repeat till last 3 dc,  
2 dc in 3<sup>rd</sup> but last dc, ch1, 2 dc in 2<sup>nd</sup> but last dc, ch 1, 1 dc in top of ch3 space.



**Row 18**

ch4, 1 dc in first st, 1 dc in next ch space, (ch1, skip 1 dc, dc in next st) x 2, ch1,  
 ([dc in ch space, ch1] x 2, [dc in ch2 space, ch1] x 2) repeat till corner,  
 2 dc, ch2, 2 dc in corner ch2 space,  
 ch1, ([dc in ch2 space, ch1] x 2, [dc in ch space, ch1] x 2) repeat till increases, skip 1 dc, dc in next dc,  
 ch1, skip ch1, 1 dc in next dc, ch1, skip 1 dc, 1 dc in next ch space, 1 dc in top of ch3, ch1, 1 dc in top of  
 ch3.

**Row 19**

ch3, 2 dc in first stitch,  
 1 dc in each stitch and chain space till corner,  
 2 dc, ch2, 2 dc in corner ch2 space,  
 1 dc in each stitch and chain space, ending with 1 dc in last ch space,  
 3 dc in top of ch3 space

**Row 20**

ch3, 2 dc in first st,  
 1 fpdc in every st till corner,  
 2 dc, ch 2, 2 dc (in ch2 space for corner),  
 1 fpdc in every stitch till the end,  
 3 dc in top of ch3

**Row 21**

ch4, 1 dc in first stitch,  
 (ch1, skip 1 stitch, dc 1) repeat till last dc before corner, ch1  
 1 dc, ch2, 1 dc (in ch2 space for corner)  
 ch1, 1 dc in next st,  
 (ch1, skip 1 stitch, dc 1) repeat till 3<sup>rd</sup> but last dc, ch1, skip 1 stitch, 1 dc, ch1, 1 dc in top of ch3

**Row 22**

same as row 19

**Row 23**

ch4, 1 dc in first st, 1 dc in next st, skip 2 stitches,  
 ([1 dc, ch 2, 1 dc] in same st, skip 3 stitches) repeat till corner – before corner skip 2 stitches instead of  
 3,  
 2 dc, ch2, 2 dc (in ch2 space for corner) skip 2 stitches  
 ([1 dc, ch 2, 1 dc] in same st, skip 3 stitches) repeat till end of row - before end skip 2 stitches instead  
 of 3, make 1 dc in last but 1 stitch, 1 dc, ch1, 1 dc in last stitch.



**Row 24**

ch4, 1 dc in first stitch, ch1, skip ch1 and 1 dc, 1 hdc, ch3, 1 lying puff stitch (make ON hdc ), ch1,  
 (1hdc in ch2 space, ch3, 1 lying puff stitch on hdc, ch1) repeat till corner.

1 dc in first of the 4 dc (forming the corner) of previous row, ch1, skip 1 dc,  
 2 dc, ch2, 2 dc (in ch2 space for corner)

ch1, skip 1 dc, 1 dc in 4<sup>th</sup> dc of the 4 dc (forming the corner) of previous row,  
 (ch1, 1 hdc in ch2 space, ch3, 1 lying puff stitch in same hdc) repeat till end,  
 ch1, 1 dc in top of ch3, ch1, 1 dc in top of ch3

**Row 25**

ch4, 1 dc in first st, ch1, skip ch1, 1 dc in next dc, (in next hdc: [1 dc, ch2, 1 dc]) repeat till corner, make  
 the last (1dc, ch2, 1 dc) in the last dc before the 4 dc that make the corner, skip 2 dc,

2 dc, ch2, 2 dc (in ch2 space for corner)

skip 2 dc and ch1, (1 dc, ch2, 1 dc) in the next dc, (in next hdc: [1 dc, ch2, 1 dc]) repeat till end,  
 make 1 dc in the one but last dc, (ch1, 1 dc) x 2 in top of ch3

**Row 26**

ch3, 2 dc in first st, (1 dc in next ch space, 1 dc in next dc) x 2, (1 dc in next dc, 2 dc in next ch2 space, 1  
 dc in next dc) repeat till corner, (1 dc in next st) x 2

2 dc, ch2, 2 dc (in ch2 space for corner)

(1 dc in next st) x 2, (1 dc in next dc, 2 dc in next ch2 space, 1 dc in next dc) repeat till last 4 stitches,  
 (make 1 dc in next dc, 1 dc in next ch space) x 2, 3 dc in top of ch3

**Row 27**

ch3, 2 dc in first st, 1 sc in every st till corner,

2 dc, ch2, 2 dc (in ch2 space for corner)

1 sc in every st till end, 3 dc in top of ch3

**Row 28**

ch4, 1 dc in first st, ch1, 1 dc in 3<sup>rd</sup> dc, (ch1, skip 1 sc, 1 dc in next sc) repeat till corner, ch1,

1 dc, ch2, 1 dc (in ch2 space for corner),

ch1, 1 dc in next st, ch1, skip 1 dc, (1 dc in next sc, ch1, skip 1 sc) repeat till last sc, 1 dc in next dc, ch1,  
 skip 1 dc, (1dc, ch1, 1 dc) in top of ch3.

**Row 29**

ch3, 2 dc in first st, 1 dc in every st and ch space till corner,

2 dc, ch2, 2 dc (in ch2 space for corner)

1 dc in every st and ch space till end, 3 dc in top of ch4

**Row 30**

same as row 20

**Row 31**

same as row 29



**Row 32**

same as row 30 (= row 20)

**Row 33**

ch3, 2 dc in first st, (1 dc in next st) x 3,

([1 dc in next st] x 8, ch5, skip 1 st, [1 dc in next st] x 7) repeat till corner

ending with (1dc in next st) x6,

1 dc, ch4, 1dc (in ch2 space for corner),

(1 dc in next st) x 6, ch5, skip 1 st, (1 dc in next st) x 8,

([1 dc in next st] x 7, ch5, skip 1 st, [1 dc in next st] x 8) repeat till end, ending with (1dc in next st) x 8,

(1 dc in next st) x 3, 3 dc in top of ch3

**Row 34**

Ch5 in first st, 5 dc in next 5 sts,

( 6dc in next 6 st, ch3, skip 1 st, 2sc in 5ch space, 3ch, skip 1 st, 5dc in next 5 st) repeat till corner,

ch3, 2 dc in ch4 space, ch 3

( 5dc in next 5 st, ch3, skip 1 st, 2sc in 5ch space, 3ch, skip 1 st, 6dc in next 6 st) repeat till 6 sts to the end, 5dc in next 5 st, 2ch and dc in last st.

**Row 35**

ch3, 2 dc in first st, ch4, skip ch2 space and next 2 dc, (1 dc in next st) x 3,

([1 dc in next st] x 4, ch4, 1 sc in ch3 space,[1 sc in next sc] x 2, 1 sc in ch3 space, ch4, skip 2 dc,

[1 dc in next st] x 3) repeat till corner,

2 dc in ch3 space, ch2, 2 dc in next dc, (=2 in 1 st), ch2, 2 dc in next dc (=2 in 1 st), ch2, 2 dc in ch3 space,

([1 dc in next st] x 3,ch4, skip 2dc, 1 sc in ch3 space, [1 sc in next sc] x 2, 1 sc in ch3 space, ch4, skip 2

dc, [1 dc in next st] x 4) repeat till end, after last 4 dc, make (1 dc in next st) x 3, ch4, skip 2 dc and 2

ch, 3 dc in 3<sup>rd</sup> ch of ch5.

**Row 36**

ch3, 2 dc in first st, ch3, 2 dc in ch4 space, (1 dc in next st) x 3,

([1 dc in next st] x 4, 2 dc in ch4 space, ch 3, skip 1 sc, [1 sc in next sc] x 2, ch3, skip 1 sc, 2 dc in next

ch4 space, [1 dc in next st] x 3) repeat till corner, after last [(1dc in next st) x 3] make

(1 dc in next st) x 2, 2 dc in ch2 space,

(1dc in next st) x 2,

2 dc, 2 ch, 1 dc - in corner ch2 space,

(1dc in next st) x 2, 2 dc in ch2 space, (1 dc in next st) x 2, ([1 dc in next st] x 3, 2 dc in ch4 space, ch3,

skip 1 sc, [1 sc in next sc] x 2, ch3, skip 1 sc, 2 dc in ch4 space, [1 dc in next st] x 4) repeat till end, after

last [(1 dc in next st) x 4]) make (1 dc in next st) x 3, 2 dc in ch 4 space, ch3, 3 dc in top of ch3





**Row 37**

ch3, 2 dc in first st, ch1, skip 1 dc, 1 dc in next st, 3 dc in ch3 space, (1 dc in next st) x 5,  
 ([1 dc in next st] x 6, 2 dc in ch 3 space, ch1, skip 2 sc, 2 dc in next ch3 space, [1 dc in next st] x 5)  
 repeat till corner, after last  
 [(1 dc in next st)] x 5 make (1 dc in next st) x 8,  
 2 dc, 2 ch, 1 dc - in corner ch2 space,  
 (1 dc in next st)x 8,  
 ([1 dc in next st] x 5, 2 dc in ch3 space, ch1, skip 2sc, 2 dc in next ch3 space, [1 dc in next st] x 6) repeat  
 till end after last [(1 dc in next st) x 6] make (1 dc in next st) x 5, 3 dc in ch3 space, 1 dc in next st, ch1,  
 skip 1 dc, 3 dc in top of ch3

**Row 38**

ch3, 2 dc in first st, (1 fpdc in next st) x 2, 1 dc in ch1 space, (1 fpdc in every st till next ch1 space, 1 dc in  
 ch1 space) repeat till corner,  
 2 dc, ch2, 2 dc in corner ch2 space,  
 (1 fpdc in every st till next ch1 space, 1 dc in ch1 space) repeat till end, after last (dc in ch1 space) make  
 (1 fpdc) x 2, 3 dc in top of ch3.

**Row 39**

ch3, 2 dc in first st, 1 dc in every stitch till corner,  
 2 dc, ch2, 2 dc in corner ch2 space,  
 1 dc in every stitch till end, 3 dc in top of ch3.

**Row 40**

ch3, 2 dc in first st, 1 fpdc in every stitch till corner,  
 2 dc, ch2, 2 dc in corner ch2 space,  
 1 fpdc in every stitch till end, 3 dc in top of ch3.



## Border II (alternative):

ch3, 2 dc in first st, sc in next st, 4ch, puff stitch (= yo 4x) in next st,  
 1ch, skip 2sts, (sl st in next st, 4ch, puff stitch (= yo 4x) in next st, 1ch, skip 2sts) repeat till 2st from  
 corner, sl st in next st, sc in next st,  
 (3ch, puff stitch(= yo 3x), 1ch, puff stitch(= yo 3x), 1ch, puff stitch(= yo 3x), 3ch) – all in corner 2ch  
 space  
 sc in next st, puff stitch (= yo 4x) in next st, 1ch, skip 2sts, (sl st in next st, 4ch, puff stitch (= yo 4x) in  
 next st, 1ch, skip 2sts) repeat till 3st from end, sl st in next st, sc in next st, 3dc in last st.



## Border I (base):

In blue: repeat,

In red: the middle of the shawl,

In purple: stitches are together (don't pull the last loop through until you've made all of the stitches  
 show

### Row 1:

3 DC in first st, SC in each stitch to middle ,

3 SC in middle ,

SC in each stitch to end, 3 DC in top of ch3.



**Row 2:**

3 ch and 2 dc in first st, 2 DC together with 1 DC between them ( first part into next st, skip 1 dc, second into next st), \* CH, picot, CH, 2 DC together with 3 SC in between them \* repeat to middle , CH, picot, CH, 2 DC together with 2 SC between them – second part in sc just in the middle,

CH, picot, CH, TR, CH, picot, CH, TR, CH, picot, CH,

2 DC together with 2 SC between them - first part in sc just in the middle, \*CH, picot, CH, 2 DC together with 3 SC between them \* repeat to last 4 stitches , CH, picot, CH, 2 DC together with 1 DC between them , 3 DC in top of ch3.

**Row 3:**

3 ch and 2 dc in first st, in 2nd DC: (slip st + 6 CH + 3 DTR together joined with next ), in picot: ( 3 DTR together joined with previous + 6 CH + slip stitch), \*5 CH, slip stitch in next picot, 5 CH, {slip stitch + 6 CH + 3 DTR together joined with next } in next picot, { 3 DTR together joined with previous , + 6 CH + slip stitch} in next picot\* repeat to just before 3 picots in middle , 5 CH, slip stitch in next picot, 5 CH,

(slip stitch + 6 CH + 3 DTR together in picot joined with 3 DTR together in next picot + 6 CH + slip stitch in next picot + 6 CH + 3 DTR together in picot joined with 3 DTR together in next picot + 6 CH + slip st)

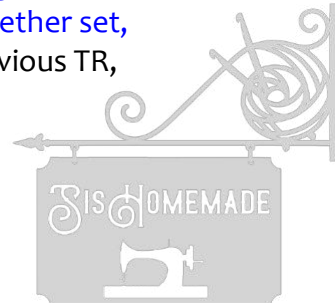
5 CH, slip stitch in next picot, 5 CH, \*{slip stitch + 6 CH + 3 DTR together joined with next } in next picot, { 3 DTR together joined with previous , + 6 CH + slip stitch} in next picot, 5 CH, slip stitch in picot, 5 CH\* repeat to last picot, (slip stitch in next picot + 6 CH + 3 DTR together joined with next), ( 3 DTR together joined with previous + 6 CH + slip stitch) in 2nd but last DC, 3 DC in top of ch3.

**Row 4:**

4 ch and 2 TR in first st, \* (in between next set of 3 DTR together: TR, 3 CH, TR, 6 CH, laying TR made into top of previous TR, TR, 3 CH, TR), (TR, 3 CH, TR in ch-5-sp) 2X\* repeat doing 1 TR, 3 CH, TR in last ch-5-sp before middle,

middle: in between set of 3 DTR together: TR, 3 CH, TR, 6 CH, laying TR made into top of previous TR, TR, 3 CH, TR, in 6-ch-sp: (TR, 3 CH, TR, 6 CH, TR), in next 6-ch-sp: (TR, 6 CH, TR, 3 CH, TR), in between set of 3 DTR together: TR, 3 CH, TR, 6 CH, laying TR made into top of previous TR, TR, 3 CH, TR,

TR, 3 CH, TR in 5-CH-sp, \* (in between next set of 3 DTR together: TR, 3 CH, TR, 6 CH, laying TR made into top of previous TR, TR, 3 CH, TR), (TR, 3 CH, TR in 5-CH-sp) 2X\* repeat to last 3 DTR together set, (in between next set of 3 DTR together: TR, 3 CH, TR, 6 CH, laying TR made into top of previous TR, TR, 3 CH, TR), 3 DC in top of ch3.



**Row 5:**

3ch and 2 DC in first st, 1 SC in next st, 1 sl st in next st, \* 4 slst in next 3-CH-sp, (3 slst + 1 picot + 3 slst in 6-CH-sp), 4 slst in 3 CH, (4 slst in 3-CH-sp)\*2,

\* repeat to last single TR, 3 CH, TR, (4 slst in 3-CH-sp, (3 slst + 1 picot + 3 slst in 6-CH-sp), 4 slst in 3-CH-sp,

(in first center 6-CH-spacs: 3 slst + 1 picot + 3 slst, 6 CH + 3 DTR together joined with 3 DTR together in next 6 CH + 6 CH, slip stitch into 5th CH, TURN, 3 slst into 6 CH, 6 CH, 3 DTR together between 2 dtr together just made below, 6 CH, slip stitch into 6 CH on other side, TURN, 6 slst into 6 CH just made, Picot in top of 3 DTR together cluster, 6 slst in next 6 CH, 3 slst in next 6 CH, 2 slst in second center ch-6-sp, 1 picot, 3 slst in ch-3-sp

complete the rest of the row in mirror image.

