

# Narrow Crochet Skull Scarf

---

## Materials needed:

3.5mm hook

2 skeins of Super fine Sock Weight yarn

Yarn needle

Scissors

## Abbreviations:

ch – chain

sl st – slip stitch

sc – single crochet

dc – double crochet

rd – round

Make two scarf's and sew/ whip stitch them together. Each part should have 8 skulls.

The finished scarf measures:

6 1/4" wide

66" long

**It could be very helpful if you are familiar with the Crochet Skull shawl/Döskallesjal pattern by kungen och majkis as parts of that pattern were used to create this one.**

## Turn after each row!

Start with chain 46.

**Rd 1** – ch2, dc in 4<sup>th</sup>ch from hook, 3 dc,\* ch2, skip 2 st, 4 dc\* to end of row.

**Rd 2** – ch4, \*4 dc in space, ch2, 4 dc in space\* ch2, dc.

**Rd 3** – ch2, 3 dc in space, \*ch2, 4 dc in space\* to end of row.



**Rd 4** – ch4, 4 dc in space, ch2, 4 dc in space, ch2, 4 dc in space, ch9, skip one space, 4 dc in next space, ch2, 4 dc in space, ch2, 4 dc in space, ch2, dc.

**Rd 5** – ch2, 3 dc in space, ch2, 4 dc in space, ch2, 4 dc in space, ch6, 4 sc around the chain, ch6, 4 dc in space, ch2, 4 dc in space, ch2, 4 dc in space.

**Rd 6** - ch4, 4 dc in space, ch2, 4 dc in space, ch6, 1 dc, ch1, 1 dc, ch1, 1 dc, ch1, 1 dc (Tip: worked on the 4 sc from the previous row, these will be the teeth) ch6 , 4 dc in space, ch2, 4 dc in space, ch2, dc.

**Rd 7** – ch2, 3 dc in space, ch2, 4 dc in space, ch8, 11 sc on the skull (**2 around chain, 1 in the dc, 1 around the chain, 1 in the second dc, 1 around the ch, 1 in the third dc, 1 around the ch, 1 in the 4th dc, 2 around the chain**) ch8, 4 dc in space, ch2, 4 dc in space.

**Rd 8** - ch4, 4 dc in space, ch10, 4 sc (Tip: on the 4 last sc of the 11 sc from the previous row).  
Ch5 (Tip: this will be the nose), skip 3 stitches, 4 sc (Tip: on the first 4 sc from the 11 sc from the previous row). **Turn now!** (Tip: you should be in the 'middle' of the row)  
Ch10, 1 sc around the chain 5, ch10 and sl st in the very first sc of this row. (Tip: you just made the arches of the eyes)  
**Turn again!** 10sc around **each** arch (20 total), sl st (Tip: in the 8<sup>th</sup> sc you made in this row). Ch10, 4 dc in space, ch2, dc.

**Rd 9** – ch2, 3 dc in space, ch2, 4 dc in space, ch10, 16 **sl st** on the eyes of the skull (Tip: count 8 from the middle so your stitches will be balanced) ch8, 4 dc in space, ch2, 4 dc in space.

**Rd 10** - ch4, 4 dc in space, ch2, 4 dc in space, ch 6, 12 sc on skull, ch6, 4 dc in space, ch2, 4 dc in space, ch2, dc.

**Rd 11** – ch2, 3 dc in space, ch2, 4 dc in space, ch2, 4 dc in space, ch6, 8 sc on skull, ch6, 4 dc in space, ch2, 4 dc in space, ch2, 4 dc in space.

**Rd 12** - ch4, 4 dc in space, ch2, 4 dc in space, ch2, 4 dc in space, ch6, 6 sc on skull, ch6, 4 dc in space, ch2, 4 dc in space, ch2, 4 dc in space, ch2, dc.

**Rd 13** – ch2, 3 dc in space, ch2, 4 dc in space, ch2, 4 dc in space, ch2, 4 dc in space, ch6, 4 dc in space, ch2, 4 dc in space, ch2, 4 dc in space, ch2, 4 dc in space.

**Rd 14** - ch4, 4 dc in space, \*ch2, 4 dc in space\*, ch2, dc.

**Rd 15** – ch2, 3 dc in space, \*ch2, 4 dc in space\* to end of row.

**Rd 16** – same as rd 4



Repeat rows 4-15 until desired length.

Make second part and whip stitch together.

Block if needed.

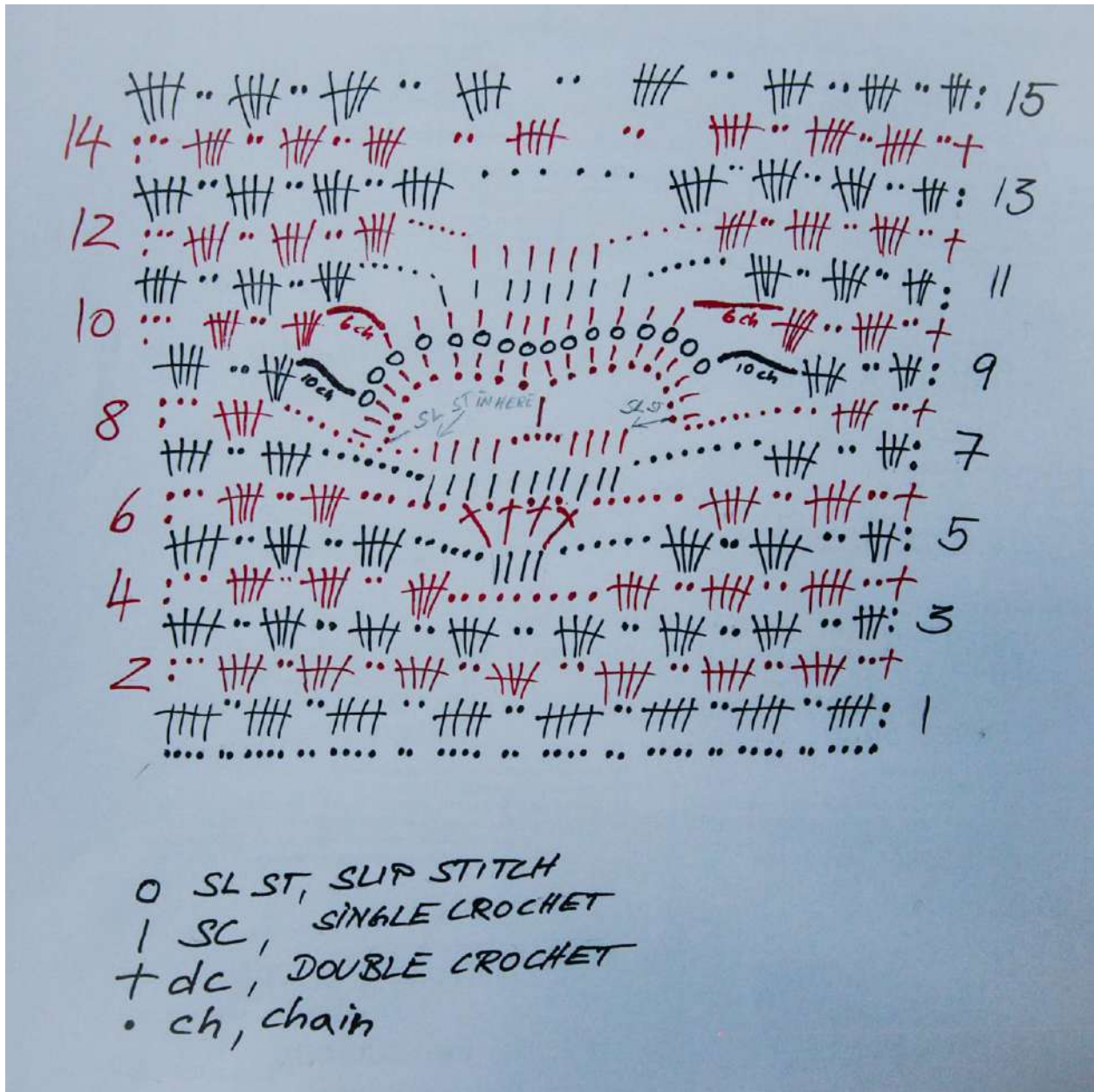
***Please feel free to share or link to this free pattern. If you like to sell finished items, you may do so, but please honor me as the designer and treat this pattern as you would wish yours to be treated. So please do not sell this pattern!  
It was designed to be shared for free with people who also love to knit and crochet. Thanks!***

For any questions about this pattern either contact me on Ravelry (Nadelwerk) or send me an e-mail ([karin@nadelwerk.com](mailto:karin@nadelwerk.com))

I would love to see pictures of your finished scarf on Ravelry.

If you find any mistakes, please let me know and I'll try to correct them as soon as my busy schedule allows me. Thank you.





Updated August 17, 2015